



I.L. MOTORSPORT

Installation instructions

Illuminated gear knob

NC0-301622 / NC0-301623 / NC0-301742 / NC0-301743

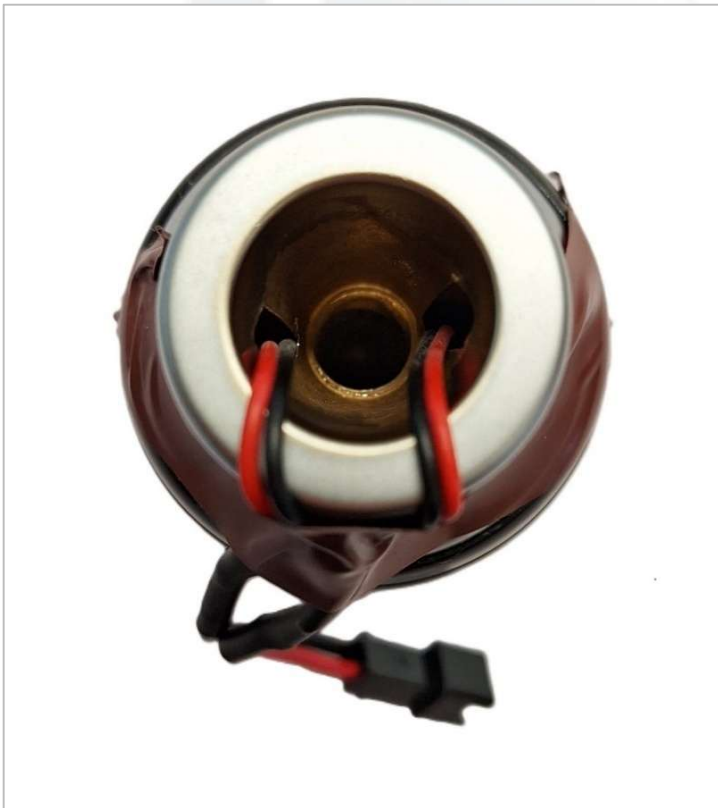
03.2025

Package contents:	A: Gear knob	1 Piece
	B: Shift boot	1 Piece
	C: Sheathed cable	1 Piece
	D: Connector	2 Pieces
	E: Splice Connectors	2 Pieces
	F: Fuse 10A	1 Piece
	G: Fuse holder	1 Piece

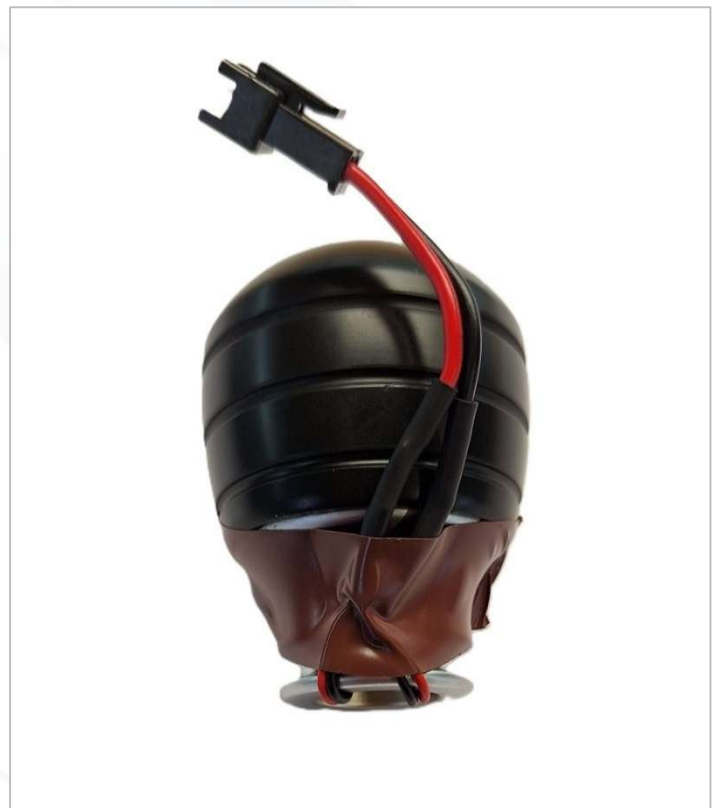


Attention important!

Before installing the new gear knob, make sure to secure the cables with adhesive tape as follows to prevent damage. (Picture 1 and 2)



Picture 1

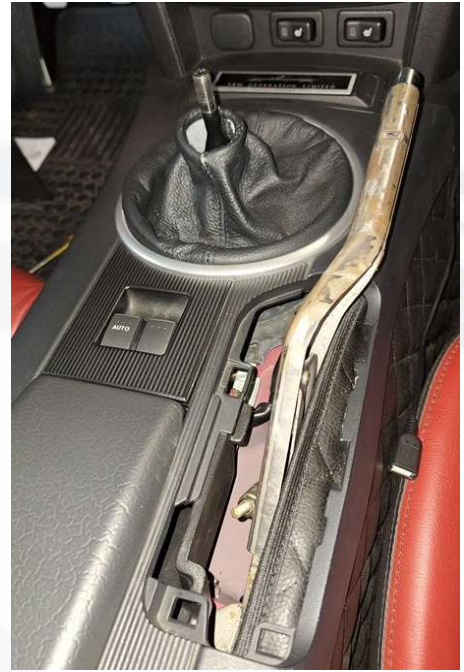


Picture 2

1. Unscrew the gear knob. Carefully detach the handbrake lever cover from the center console and pull the handbrake lever handle forward and off the lever. (Picture 3 and 4)



Picture 3



Picture 4

2. Carefully loosen the cover using a plastic assembly tool. (Picture 5) Loosen and remove the two screws underneath. (Picture 6)



Picture 5



Picture 6

3. Carefully loosen the cover using a plastic assembly tool. (Picture 7) Loosen and remove the two screws underneath. (Picture 8)



Picture 7



Picture 8

4. Pull the center console upward at the front of the dashboard to release it. (Picture 9) Unlatch and disconnect the power window switch connector and set the center console aside. (Picture 10)



Bild 9



Picture 10

5. Replace the shift boot by loosening the four screws on the support frame (Picture 11), detaching the old shift boot from the frame, and installing the new one in reverse order (Picture 12 and 13).



Picture 11



Picture 12



Picture 13

6. There are two different ways to illuminate the gear knob.

- a. Connection via the lighting cable. The knob only lights up when the lighting is switched on.
- b. Connection via the ignition plus wire. The knob lights up as soon as the ignition is switched on.

7. Route the cable to the gear lever and guide it from below through the gearshift boot. (Picture 14)
Install the center console in reverse order (steps 2-4).
Screw the gearshift knob onto the gearshift lever and connect the connectors. (Picture 15)



Picture 14



Picture 15

8. Route the cable inside the shift boot without kinks, then pull it upwards into the groove on the shift knob. This will secure the shift boot. (Picture 16 and 17)



Picture 16



Picture 17